

ZOOMLION[®] QY65H-3

ZLJ5450JQZ65H

Full Hydraulic Truck Crane Technical Specifications

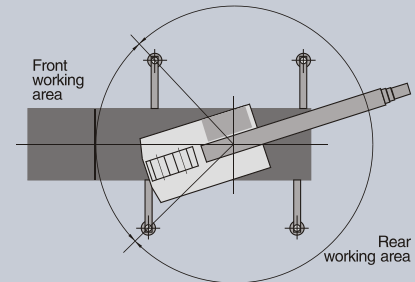


We reserve the right to change design and specifications without notice

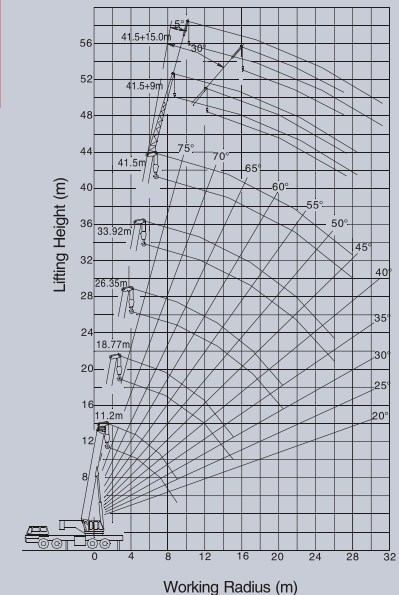
Rated Lifting Capacity Table

Unit: kg

working radius (m)	Boom(extend cylinder I firstly and completely)					Boom(extend cylinder II firstly and completely)					Boom(extend cylinder I firstly but not completely)					boom angle (°)	boom + jib					
	with outriggers fully extended in side & rear working area					with outriggers fully extended in side & rear working area					with outriggers fully extended in side & rear working area						41.5m+9m		41.5+15m			
	Boom length					Boom length					Boom length						offset angle of jib		offset angle of jib			
	11.2m	15.00m	18.77m	26.35m	33.92m	41.5m	11.2m	18.77m	26.35m	33.92m	41.5m	11.2m	15.00m	18.77m	26.35m		33.92m	41.5m	5°	30°	5°	30°
3.0	65000					65000					65000						80°	4000	2150	2400	1000	
3.5	61500					61500					61500						78°	3800	2050	2180	1000	
4.0	54000	46000	36000			54000					54000						76°	3500	1950	1920	1000	
4.5	48000	43000	35500			48000					48000						74°	3150	1900	1820	1000	
5.0	46500	40000	34000	21500		46500	22000				46500	23000	22000				72°	2850	1850	1690	1000	
5.5	40000	35000	32000	21500		40000	22000				40000	23000	22000				70°	2700	1800	1530	1000	
6.0	38000	33000	30000	21500		38000	22000				38000	22000	22000				68°	2550	1750	1380	900	
6.5	31000	28000	28500	21500		31000	21000				31000	21000	21000				66°	2450	1650	1230	800	
7.0	28000	26000	27000	21000	16500	28000	20000	16500			28000	20000	20000	16500			64°	2150	1400	1080	700	
8.0	22000	20000	21000	19000	15500	22000	19000	15500			22000	16800	19000	15500			62°	1850	1150	950	600	
9.0	16000	15500	15500	17000	14500	9000	16000	15500	14500	9000	9000	16000	15200	15000	14500	9000	9000	1550	1000	830		
10.0		12000	13000	13500	13000	8800		13000	13000	8800	8800		12000	12000	12500	8800	8800	58°	1350	850	700	
11.0		10800	10000	11500	11500	8300		11500	11500	8300	8300		10800	10000	10000	8300	8300	56°	1100	700	600	
12.0		9000	8500	9000	9500	8000		8800	10000	8000	8000		9000	8000	9000	8000	8000	54°	950	550	500	
13.0			6500	7800	9000	7500		7000	8500	7500	7500		6500	7800	7500	7500	7500	52°	750			
14.0			5000	6500	8000	7300		6200	7500	7300	7300		5000	6500	7300	7300	7300	50°				
15.0				5500	6500	6500			6500	6500	6500			5500	6500	6500						
16.0				4500	6200	6000			5500	6200	6000			4500	6200	6000						
18.0				3200	4800	5000			4600	4900	5000			3200	4800	5000						
20.0				2000	3000	4000			3300	3900	4000			2000	3000	4000						
22.0				1500	2400	2800				3000	2800			1500	2400	2800						
24.0					1800	2000				2500	2000				1800	2000						
26.0						1500					1500				1200	1500						
28.0						1000					1000					1000						
(Critical boom angle)				25°	35°	42°																
							25°	35°	42°													
										25°	35°	42°										



Set up the 5° outrigger and then it is suitable for 360° operation.



ZOOMLION[®] QY65H-3

ZLJ5450JQZ65H

Full Hydraulic Truck Crane Technical Specifications



We reserve the right to change design and specifications without notice

Rated Lifting Capacity Table

Unit: kg

working radius (m)	Boom(extend cylinder I firstly and completely with auxiliary counterweight)						Boom(extend cylinder I firstly and completely with auxiliary counterweight)						Boom(extend cylinder I firstly but not completely with auxiliary counterweight)						boom angle (°)	boom + jib			
	with outriggers fully extended in side & rear working area						with outriggers fully extended in side & rear working area						with outriggers fully extended in side & rear working area							41.5m+9m		41.5+15m	
	Boom length						Boom length						Boom length							offset angle of jib		offset angle of jib	
	11.2m	15.00m	18.77m	26.35m	33.92m	41.5m	11.2m	18.77m	26.35m	33.92m	41.5m	11.2m	18.77m	26.35m	33.92m	41.5m	5°	30°		5°	30°		
3.0	65000						65000					65000					4000	2150	2400	1000			
3.5	61500						61500					61500					80°	3800	2050	2180	1000		
4.0	54000	46000	36000				54000					54000					78°	3500	1950	1920	1000		
4.5	48000	43000	35500				48000					48000					76°	3150	1900	1820	1000		
5.0	46500	40000	34000	21500			46500	22000				46500	22000				74°	2850	1850	1690	1000		
5.5	40000	35000	32000	21500			40000	22000				40000	22000				72°	2700	1800	1530	1000		
6.0	38000	33000	30000	21500			38000	22000				38000	22000				70°	2550	1750	1380	900		
6.5	33500	28000	28500	21500			33500	21000				31000	21000				68°	2450	1650	1230	800		
7.0	29000	26000	27000	21000	16500		29000	21000	16500			28000	20000	16500			66°	2150	1400	1080	700		
8.0	23500	21000	23000	19000	15500		23500	19000	15500			22000	19000	15500			64°	1850	1150	950	600		
9.0	17500	17000	17000	17000	14500	9000	17500	15500	14500	9000	9000	16000	15000	14500	9000	9000	62°	1550	1000	830			
10.0		12800	13500	15000	13000	8800		13000	13000	8800	8800		12000	13000	8800	8800	60°	1350	850	700			
11.0		11000	11500	13000	12000	8300		11500	11500	8300	8300		11500	11500	8300	8300	58°	1100	700	600			
12.0			9000	10000	11500	8000		8800	10000	8000	8000		9000	9000	8000	8000	56°	950	550	500			
13.0			7200	8500	10500	7500		7500	8500	7500	7500		7200	7800	7500	7500	54°	750					
14.0			5800	7500	9200	7300		6500	8000	7300	7300		5800	7000	7300	7300	52°						
15.0				6500	7500	6500			7000	6800	6500			6500	6500	6500	50°						
16.0				5500	6500	6400			6800	6600	6400			5500	6200	6400							
18.0				4500	5000	5300			5000	5200	5300			4500	5000	5300							
20.0				3200	3800	4500			4000	4000	4500			3200	3800	4500							
22.0				2500	2900	3500				3500	3500			2500	2900	3500							
24.0					2200	2500				3200	2500				2200	2500							
26.0						1800					1800					1800							
28.0						1200					1200					1200							
(Critical boom angle)				25°	35°	42°			25°	35°	42°			25°	35°	42°							

Note:

- Above working condition is when the outriggers extend completely. It is forbidden to lift a load without the support of outriggers.
- The rated total lifting capacities above the thick line listed in the table are determined by the structural strength, and the others are determined by the stability of the complete vehicle.
- Set up the 5th outrigger and then it is suitable for 360° operation.
- The rated lifting capacity in above table is the maximum permitted lifting capacity, which includes the weight of hook (main hook's weight is 565kg and auxiliary hook's weight is 100kg).
- The working radius given in the table is the horizontal distance from the central axle of slewing ring to the centerline of hook when crane is loaded.
- When actual boom length and working radius are between two values in the table, the larger value should be taken to ascertain lifting capacity.
- When boom works while that jib has been extended, its rated lifting capacity should be subtracted by not only load handling device's weight, but also jib's weight 2000kg.
- The min. wire rope falls (the number of wire rope) of hook should be determined under the condition that the lifting capacity of single wire rope is not more than 5420kg. The falls of wire rope for jib is 1, and the standard rope falls of wire rope for various boom lengths refer to the following table.
- The boom angle should not be smaller than the min. Boom angle with various boom lengths, otherwise the crane will overturn even though it does not lift a load. When the boom length is more than the value in the table, the min. Boom angle should be determined by the longer boom length.
- The complete vehicle with auxiliary counterweight is only for lifting operation. It is forbidden to travel with auxiliary counterweight, otherwise it is very dangerous!